



INSTALLATION INSTRUCTIONS

DUAL STACKED PLATE COOLER MOUNTING BRACKETS

PART # 50022

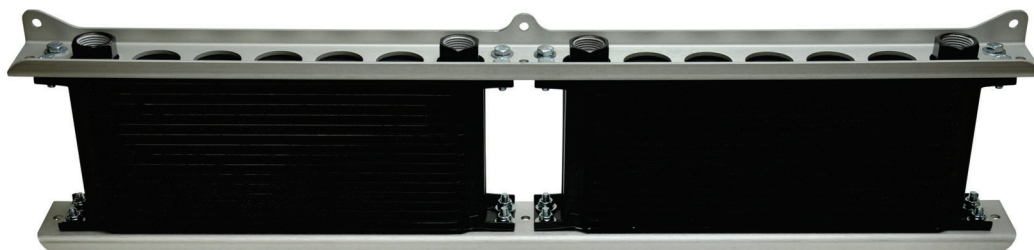
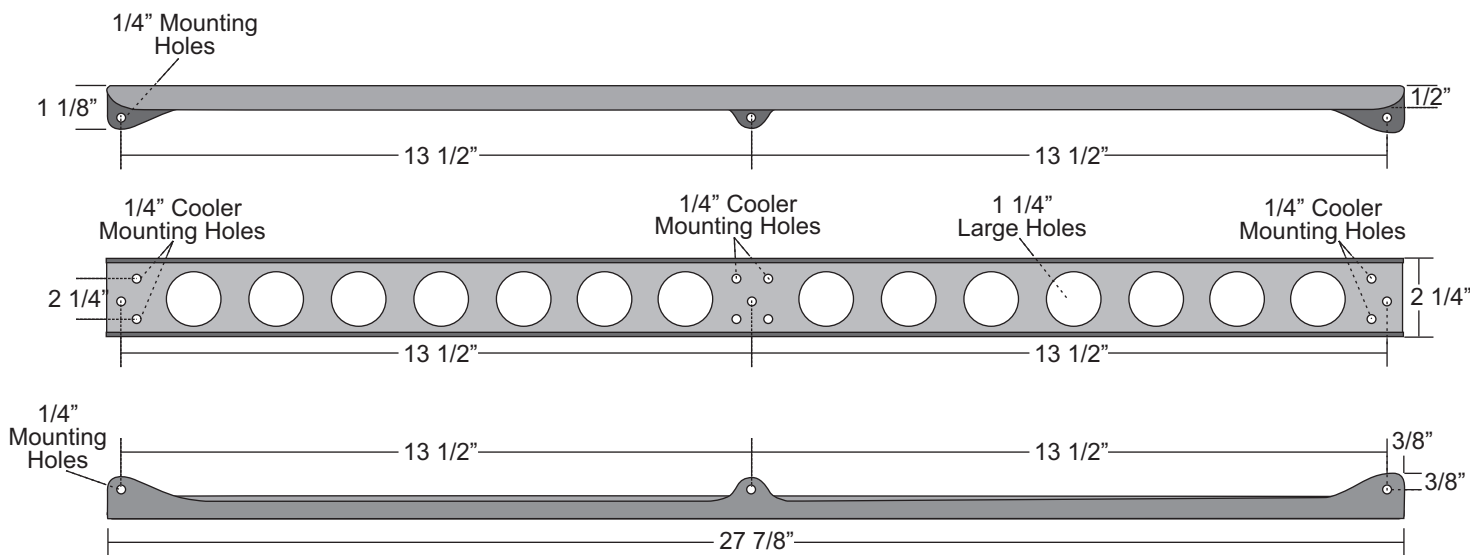
KIT CONTENTS

QTY.	DESCRIPTION
2	Mounting Brackets
16	1/4"-20 x 3/4" Hex Bolt
32	1/4" Washer
16	1/4"-20 Lock Nut

TOOLS NEEDED

- 7/16" Socket & Ratchet
- 7/16" Open End Wrench

Brackets are symmetrical and can be installed with mounting tabs up, down or a combination of both. These Brackets Fit two same size Derale Performance Stacked Plate Coolers ranging from 10, 16, 19, 25, 34 & 40 row. **Note:** Coolers not included in Kit.



Brackets mounted to 16 Row Stacked Plate Coolers